

City of Beachwood Watershed Fact Sheet



Beachwood is in 6 watersheds

Chagrin River drains 267 square miles from 22 municipalities and ten townships within four Northeast Ohio Counties.

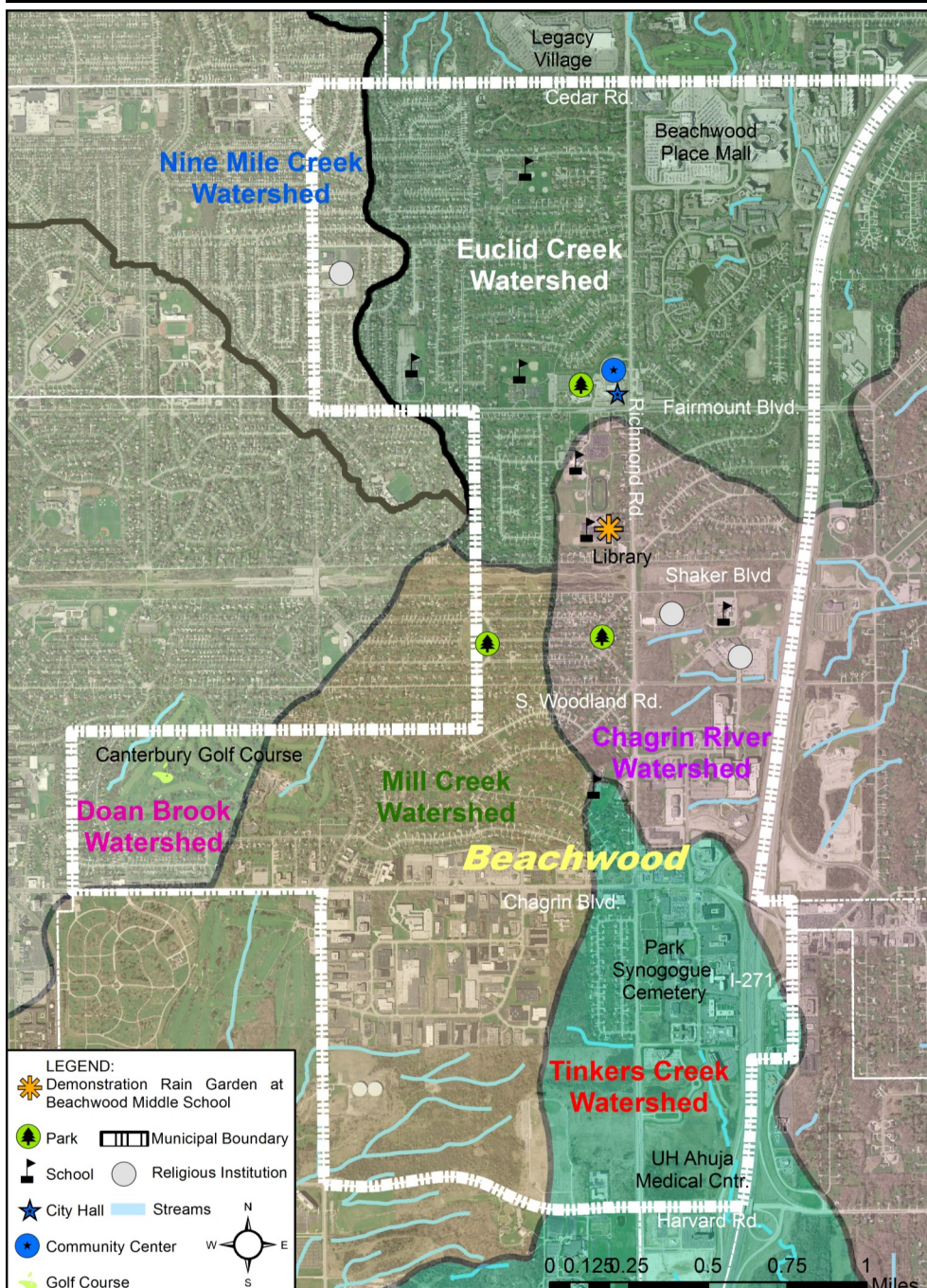
Doan Brook drains 12 square miles from 3 communities in Cuyahoga County.

Euclid Creek drains an area of approximately 24 square miles from 12 communities in Cuyahoga and Lake Counties.

Mill Creek drains approximately 19 square miles from 9 communities in Cuyahoga County.

Nine Mile Creek drains an area of approximately 18 square miles from 7 communities in Cuyahoga County.

Tinkers Creek drains approximately 96 square miles from 24 communities in four Counties.



All 6 of these waterways **drain directly into Lake Erie**, Beachwood's source of **drinking water**. Protecting your watersheds from runoff pollution also protects **Lake Erie and YOU**.

Did you know?

- Beachwood has **4.8 miles** of streams above ground with an estimated **7.2 miles** of additional streams that have been channeled underground in pipes/culverts.
- As water moves across lawns and hard surfaces into storm drains, pollution is picked up and sent untreated to creeks and rivers which eventually empty into Lake Erie.
- Vegetated surfaces, like rain gardens, help water soak into the ground which allows for natural filtration of polluted runoff.
- The rate of extinction for freshwater animals is 5 times greater than that for land animals.

Only Rain Down the Drain!

What is a watershed?
Flip to find out!

WATER—THE ULTIMATE RESOURCE

What is a watershed? A watershed is an area of land that drains rain and snow to a common body of water such as a stream, river, or lake. Our landscape is made up of interconnected watersheds.

We all live in a watershed

A Watershed

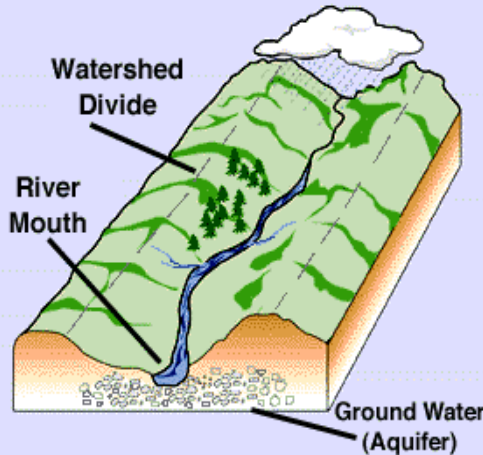


Photo by John Cozzarin, Euclid Creek

Beachwood within Euclid Creek Watershed

- Beachwood makes up 7.6% or 1.8 square miles of the entire Euclid Creek Watershed.
- There is one 3-4ft. dam in Beachwood, south of Cedar Rd.
- 0.65 miles of Euclid Creek flows through Beachwood, 40.3% of which has been channeled underground.

Beachwood within Mill Creek Watershed

- 25% of Beachwood's land area is within the Mill Creek Watershed.
- 3,082 of Beachwood residents live within this watershed.
- 0.31 miles of Mill Creek is within Beachwood, 46% of which has been channeled underground.

Beachwood within Chagrin River Watershed

- 17.4% of land area of Beachwood is within the Chagrin Watershed or 0.92 square miles.
- 16% of land cover is within this area.
- 1.4% of lands in this watershed are protected as of 2009.

Beachwood within Tinkers Creek Watershed

- 0.78% of Tinkers Creek Watershed is found in Beachwood.
- 6.2% of this watershed consists of sensitive wetlands.

Beachwood within Doan Brook Watershed

- Doan Brook Watershed is about 7,500 acres in size.
- The entire Doan Brook watershed is 38% impervious (paved) surfaces.

Beachwood within Nine Mile Creek Watershed

- Beachwood is the headwater (beginning) of Nine Mile Watershed.
- All of the streams have been channeled or piped underground.

Major water quality issues

- **Excess nutrients**, such as phosphorous and nitrogen, caused by urban pollution and fertilizers from gardens, lawn and turf maintenance.
- After major storms, high intensity stream flow (called **flashy flows**) increases **stream bank erosion**.
- **Loss of greenspace and habitat** surrounding streams that provide a buffer zone to filter pollutants and provide shelter/food for bugs and fish.

How the CITY protects your water

- Leaf pickups to prevent clogging of storm drains.
- Active member of the Chagrin River Watershed, the Euclid Creek Watershed Council, and the Tinkers Creek Watershed Partnership.
- Beachwood has a stream and wetland protection ordinance.
- Offers household hazardous waste (and other) recycling for residents.
- Allows rain barrels in community and hosts rain barrel workshops.
- Works with Cuyahoga County Board of Health on all public health concerns.
- The City supports the Green Dream Eco-Friendly Showcase, created in 2007 by the Beachwood High School Marketing Education/Junior Achievement class. It is a public venue where businesses and organizations can show how easy it was to "Go Green". This event is recognized as Ohio's largest eco-friendly showcase.

How YOU can protect your water

- Don't litter, and pick up litter when you see it.
- Keep grass clippings, paper and other waste out of storm drains.
- Report illegal dumping! Call the City Service Department (216-292-1922) or the County Board of Health (216-201-2000).
- Install a rain barrel and/or plant a rain garden.
- Pick up outside pet waste and put it in the trash.
- Wash your car on the lawn or at a carwash.
- Replace your driveway and walkways with permeable paving.
- Reduce toxic substance usage around your home and on the lawn and garden.
- Never put motor oil, antifreeze, pet waste or anything else in storm drains.
- Reduce your use of fertilizers and other chemicals on your lawn and garden.
- Clean paint from brushes, rollers and pans in the sink.

Get involved with your local conservation / watershed group and take part in keeping your watershed clean and healthy.

Euclid Creek Partners

Euclid Creek Watershed Council

(Beachwood is a Watershed Council member)

Friends of Euclid Creek

Cuyahoga Soil & Conservation District

Euclid Creek Watershed Coordinator

Claire Posius

6100 West Canal Road
Valley View, Ohio 44125

216-524-6580x16; cposius@cuyahogawcd.org

Euclid Creek Website: www.cuyahogawcd.org

Click on *Services - Watershed Programs - Euclid Creek!*



City of Beachwood

25325 Fairmount Boulevard
Beachwood, Ohio 44122

216-464-1070

www.beachwoodohio.com

Euclid Creek Watershed

Fact Sheet



EUCLID CREEK PARTNERS
EUCLID CREEK WATERSHED COUNCIL
FRIENDS OF EUCLID CREEK
CUYAHOGA SOIL & WATER
CONSERVATION DISTRICT

Claire Posius
Euclid Creek Watershed Coordinator
6100 West Canal Road
Valley View, Ohio 44125

Phone: 216-524-6580 x16

Fax: 216-524-6584

Email: cposius@cuyahogawcd.org

Fast Facts of Euclid Creek

- ◆ Drains 23 square miles through eleven communities on the east side of Cleveland and Cuyahoga and Lake County suburbs.
- ◆ The watershed is home to over 60,000 people.
- ◆ Euclid Creek is part of the Areas of Concern of the Cuyahoga River RAP as directed by the International Joint Commission.
- ◆ The creek consists of over 43 miles of stream segments of various sizes and shapes throughout the watershed.
- ◆ Drains into Lake Erie directly at Wildwood State Park and is part of the coastal landscape along Ohio's shoreline.

Water Resource Quality

The water quality of Euclid Creek is not in attainment with Ohio EPA's water quality standards of a fishable, swimmable water body.

Major Issues impacting Water Quality:

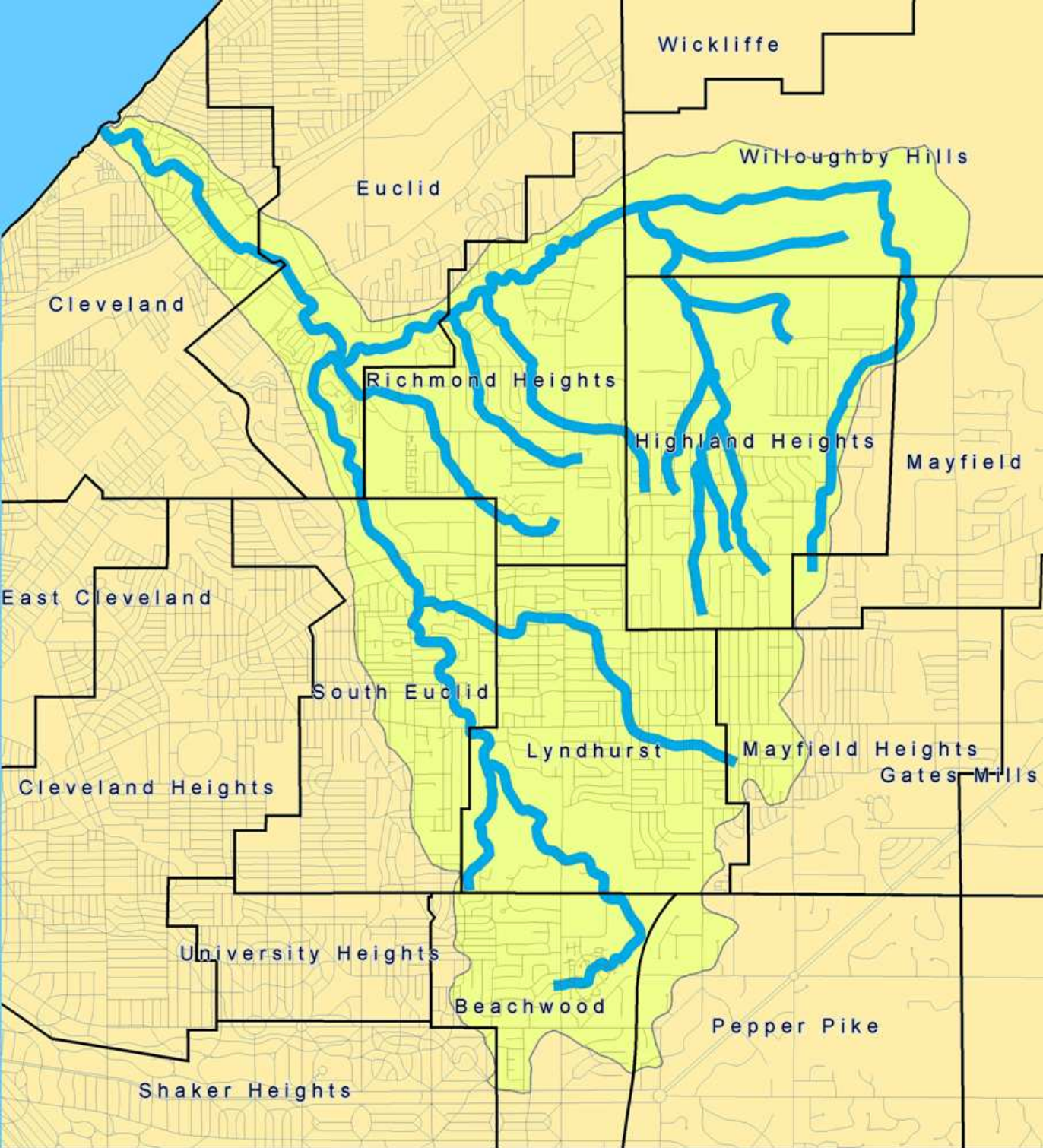
- ◆ Nutrients, such as phosphorous, caused by urban runoff and land management practices.
- ◆ Low fish populations due to loss of habitat and barriers.
- ◆ Flashy flows that increase erosion of streambanks.
- ◆ Presence of remaining illicit discharges from septics and CSO's.

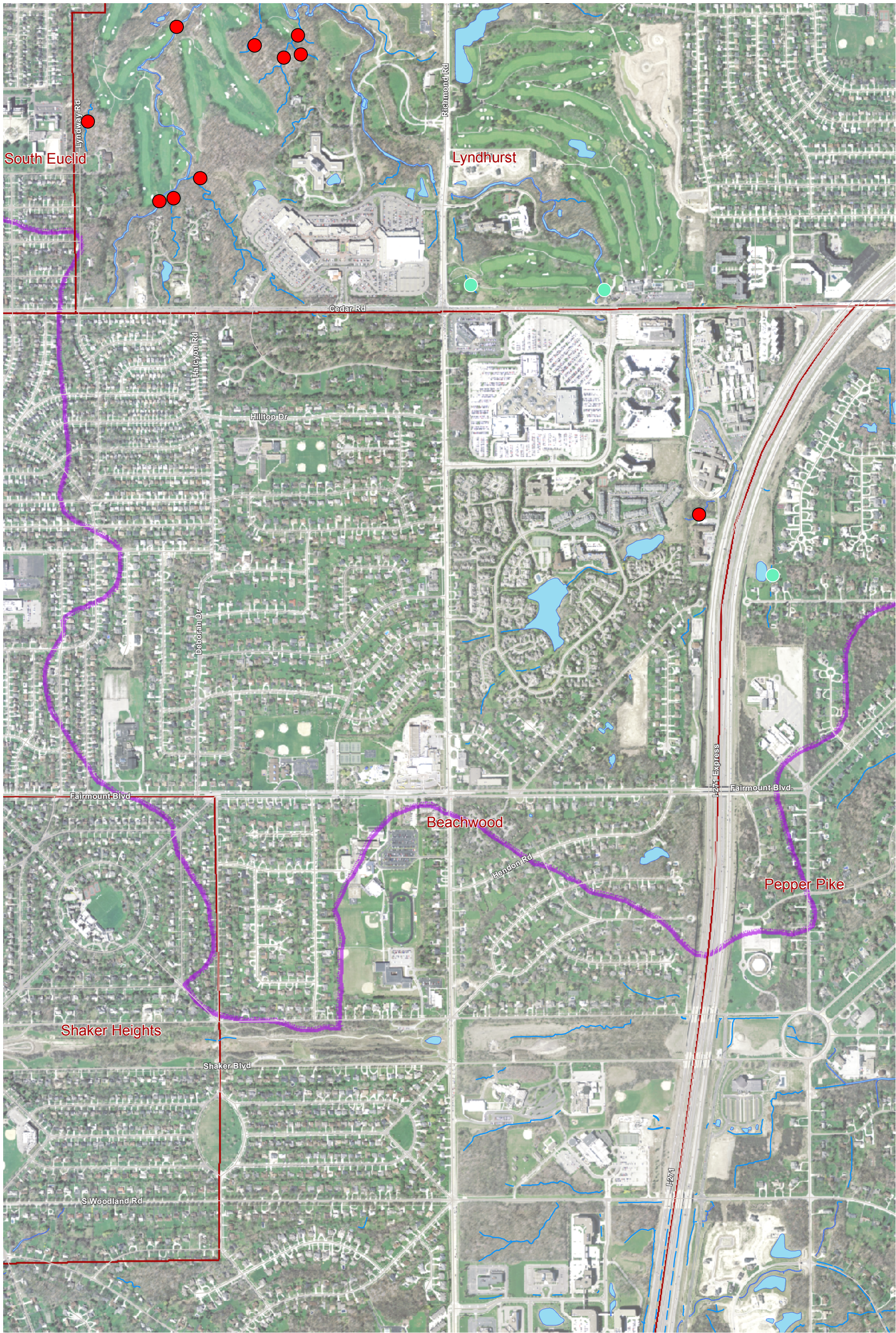
Stay Tuned / Get Involved

The Euclid Creek Partners have developed a Watershed Action Plan to guide the future of the watershed to sustain, protect and manage its resources in a sustainable way.

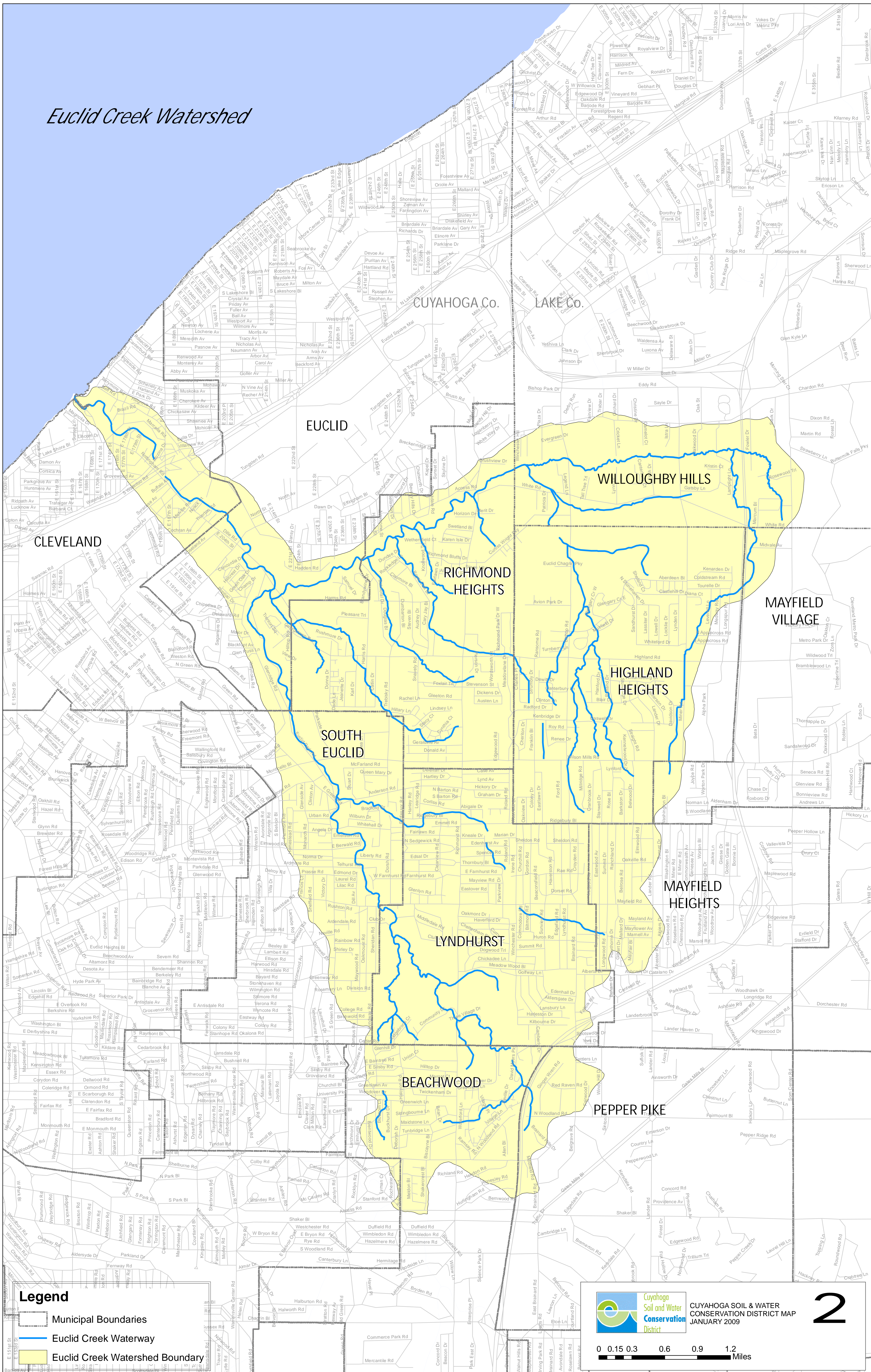
Sign-up for our email list to get news and updates—
contact the Watershed Coordinator.

Euclid Creek Watershed


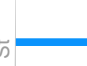





Euclid Creek Watershed



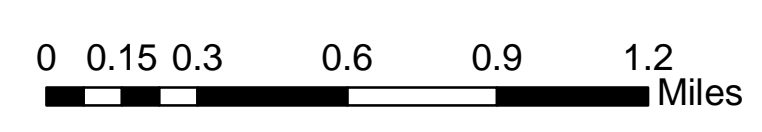
Legend

-  Municipal Boundaries
-  Euclid Creek Waterway
-  Euclid Creek Watershed Boundary



CUYAHOGA SOIL & WATER CONSERVATION DISTRICT MAP
JANUARY 2009

2





White-tailed Deer



Bald Eagle



Rock Chestnut, NRCS



Red Fox

DID YOU KNOW?

The southern portion of Cleveland Metroparks Euclid Creek Reservation is the site of the abandoned village of Bluestone. This village flourished in the late 1800s and early 1900s when its inhabitants quarried the highly valued blue-gray siltstone for use in building sidewalks and other construction.

Other unique features found within the reservation include stands of rare rock chestnut. Exciting wildlife inhabitants that are making a comeback to the watershed include bald eagles, red-tailed hawks, wild turkey, coyote, beaver, red fox and white-tailed deer.



Wild Turkey, NRCS



Beaver

EXPLORE EXPLORE

EUCLID CREEK

Current Impacts to Euclid Creek



- Flooding due to development, loss of headwater streams, and filling-in of floodplains and ravines
- Loss of headwater tributaries
- Channelization of the main-stem and tributaries
- Lack of habitat in the creek
- Urban runoff
- Sanitary sewer overflows
- Septic systems
- Illegal dumping
- Excessive erosion
- Loss of greenspace

Euclid Creek Watershed drains 23 square miles from 11 communities



WHAT IS A WATERSHED?

A watershed is an area of land that drains to a common body of water.

What can you do for Euclid Creek?

PROTECT YOUR STORM DRAINS!

Most storm drains in the watershed flow directly to Euclid Creek. Never deposit waste or trash into storm drains. They can become clogged and flood nearby basements, including your own!

Also, sweep up and reuse excess fertilizers left on sidewalks and driveways. Always recycle used motor oil and antifreeze. Contact your local County Solid Waste District for information on recycling

Fact: 1 gallon of used motor oil can contaminate 1 million gallons of drinking water.

locations in your community. For Cuyahoga County, call 216.443.3749. For Lake County, call 440.350.2582.

Fact: 80% of all the parcels of land in the watershed are within 500 feet of the main stem or a tributary to Euclid Creek.

PROTECT YOUR STREAM!

Make the effort to keep trash and yard waste out of streams. The health of Euclid Creek depends on the health of its tributaries.

in the watershed or adopt-a-spot near your home and keep it clean.

NPDES Storm Water Phase II:

Your local municipality needs your help planning and implementing their storm water management plan. Take the opportunity to voice your opinion and concerns or just find out what it's all about. Call 216.524.6580x16 for more information.

Are you a Friend of Euclid Creek?

To find out more about what's happening in the Euclid Creek watershed, join the Friends of Euclid Creek at their monthly meetings. Friends of Euclid Creek is a stream stewardship group dedicated to the protection and enjoyment of the stream and its natural attributes. They meet the first Tuesday of each month at the South Euclid Community Center at 7:00pm. Call 216.381.8433 for more information.

GET INVOLVED!

Stream Monitoring:

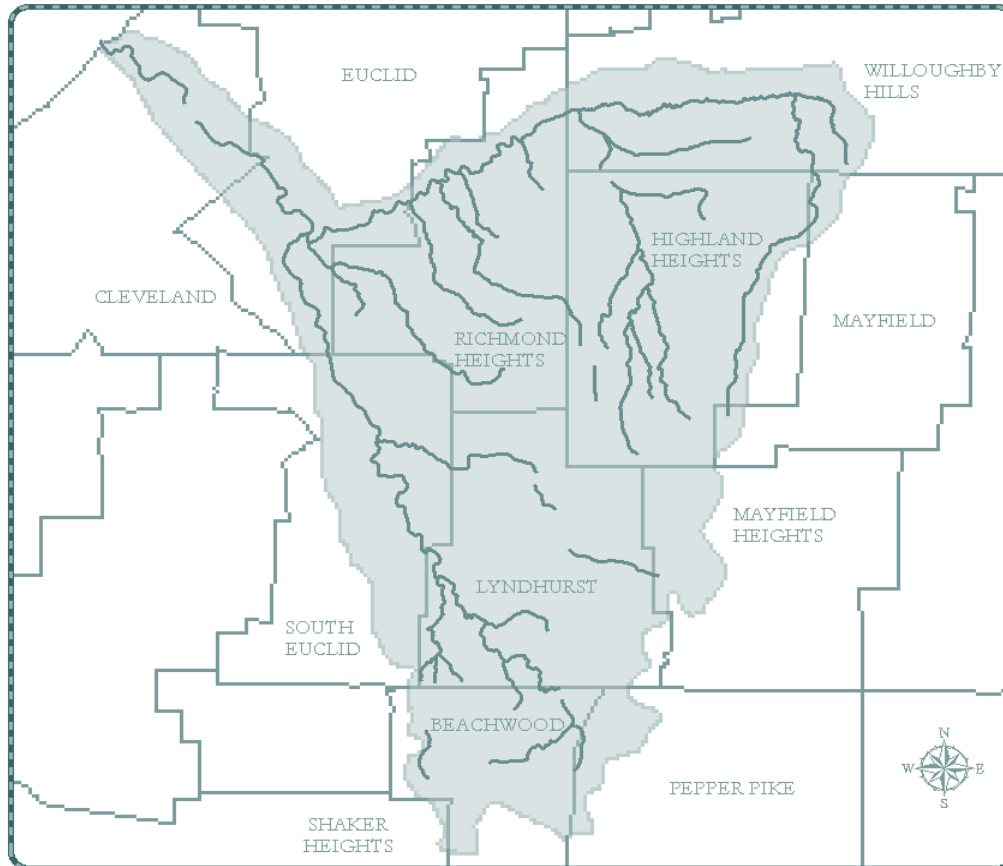
Sample the stream for macroinvertebrates. These insects live in the stream all year round and are an important indicator of water quality.

Storm Drain Stenciling:

Stenciling your storm drains is a reminder to "Dump No Waste, Drains to Creek". All the communities in the watershed have stencils available for use by groups in the watershed.

Stream Clean-ups:

Join your local community for annual clean-up activities



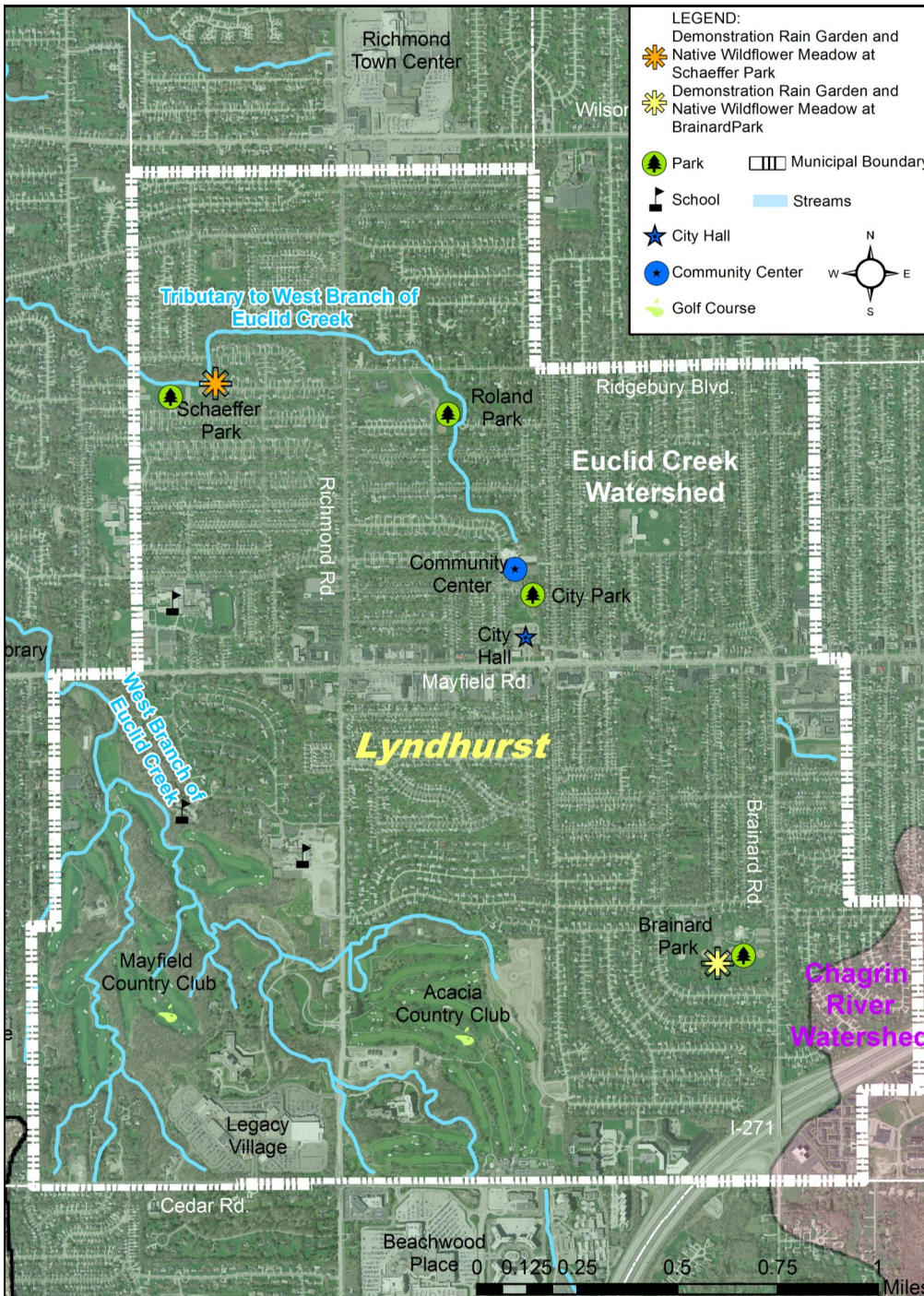
City of Lyndhurst Watershed Fact Sheet



Lyndhurst is in 2 watersheds

Euclid Creek drains an area of approximately 24 square miles from 12 communities in Cuyahoga and Lake Counties.

Chagrin River drains 267 square miles from 22 municipalities and ten townships within four Northeast Ohio Counties.



BOTH of these watersheds drain directly into Lake Erie, Lyndhurst's source of drinking water. Protecting your watersheds from polluted runoff also protects Lake Erie and YOU.

Did you know?

- Lyndhurst has **7.76 miles** of streams above ground with an estimated **2.05 miles** of additional streams that have been channeled underground in pipes/culverts.
- As water moves across lawns and hard surfaces into storm drains, pollution is picked up and sent untreated to creeks and rivers which eventually empty into Lake Erie.
- Vegetated surfaces, like rain gardens, help water soak into the ground which allows for natural filtration of polluted runoff.
- The rate of extinction for freshwater animals is 5 times greater than that for land animals.

Only Rain Down the Drain!

What is a watershed?

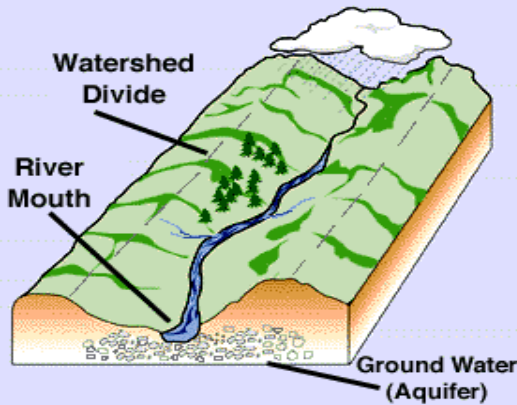
Flip to find out!

WATER—THE ULTIMATE RESOURCE

What is a watershed? A watershed is an area of land that drains rain and snow to a common body of water such as a stream, river, or lake. Our landscape is made up of interconnected watersheds.

We all live in a watershed!

A Watershed



Lyndhurst within Euclid Creek Watershed

- Lyndhurst makes up 18.3% or 4.4 square miles of the entire Euclid Creek Watershed.
- 7.76 miles of Euclid Creek runs through Lyndhurst.
- Lyndhurst has 2 areas of wetlands near the Acacia Country Club and along the East Branch of Euclid Creek.
- There are 47.27 acres of protected lands in 4 City Parks in Lyndhurst.
- About 30% of Euclid Creek has been channeled underground.
- 97% of the Lyndhurst residents live within the Euclid Creek Watershed!



Lyndhurst within Chagrin River Watershed

- Only 7.3% of Lyndhurst lands are protected within the Chagrin River Watershed.
- Due to the high level of impervious cover most streams in Lyndhurst within this watershed have lost their pollution sensitive bug/fish species.
- 15.6% of Lyndhurst land area is impervious surface (hard surfaces such as pavement) within the watershed.
- There are no protected lands found in Lyndhurst within the Chagrin River Watershed.

Major water quality issues

- **Excess nutrients**, such as phosphorous and nitrogen, caused by urban pollution and fertilizers from gardens, lawn and turf maintenance.
- **Low fish populations** due to poor water quality as well as loss of habitat and man-made barriers (e.g. dams).
- After major storms, high intensity stream flow (called **flashy flows**) increases **stream bank erosion**.
- **Loss of green space and habitat** surrounding streams that provide a buffer zone to filter pollutants and provide shelter/food for bugs and fish.



How the CITY protects your water

- Leaf pickups in the fall to prevent clogging of storm drains.
- Active member of the Euclid Creek Watershed Council.
- Works with Cuyahoga County Board of Health on all public health concerns.
- The City replaced 2 acres and 1/2 acre of turf grass within Brainard Park and Schaeffer Park respectively, with wildflower meadows. The City also helped plant 300 ft. rain gardens in each park. Both the wildflower meadows and rain gardens reduce watering and mowing needs and help filter sediments and pollution from storm water before it reaches storm drains and streams.
- Passed erosion and sediment control ordinances.
- Offers household hazardous waste (and other) recycling programs for residents.
- Adopted Sensible Salting Resolution and is investigating salt alternatives.

How YOU can protect your water

- Don't litter, and pick up litter where you see it.
- Keep grass clippings, paper and other waste out of storm drains.
- Report illegal dumping! Call the Non-Emergency Fire Dept. (440-442-1234) or the County Board of Health (216-201-2000).
- Install a rain barrel and/or plant a rain garden.
- Pick up outside pet waste and put it in the trash.
- Reduce hard surfaces. Replace your driveway and walkways with permeable paving.
- Clean paint from brushes, rollers and pans in the sink.
- Wash your car on the lawn or at a carwash.
- Reduce toxic substance usage around your home and on the lawn and garden.
- Never put motor oil, antifreeze, pet waste or anything else in storm drains.
- Reduce your use of fertilizers, pesticides and other chemicals on your lawn and garden.
- Keep your lawn 3 inches or higher to aid in water filtration.

Get involved with your local conservation / watershed group and take part in keeping your watershed clean and healthy.

Euclid Creek Partners

Euclid Creek Watershed Council

(Lyndhurst is a Watershed Council member)

Friends of Euclid Creek

Cuyahoga Soil & Conservation District



Euclid Creek Watershed Coordinator

Claire Posius

6100 West Canal Road
Valley View, Ohio 44125

216-524-6580x16; cposius@cuyahogawcd.org

Euclid Creek Website: www.cuyahogawcd.org

Click on *Services - Watershed Programs - Euclid Creek*



City of Lyndhurst

5301 Mayfield Road

Lyndhurst, Ohio 44124

440-442-5777

www.lyndhurst-oh.com